

10W CCT PRO LED Square Downlight LIFUD driver UGR19 1300Lm IP44

Product codes:

Reference: IL-90808



Product features:

Power (W): 10
Power source (V): 220-240V
Color temperature CCT: Seleccionable
3000K-4000K-6000K
LED: SMD2835
LED chip brand: EPISTAR
Luminous efficacy (Lm/W): 130
Brightness (Lm): 1300
CRI: +85
Colour: White
IP: IP44
Luminous angle: 120°
Frequency (Hz): 50-60Hz
Forma: Cuadrado
Measures (mm): 95x95x35mm
Medida de corte (mm.): 88x88mm
Material: Aluminum + PC
Driver: LIFUD flicker-free
Operating temperature: -20°C ~ +55°C
Energy efficiency 2021: A+
Energy efficiency 2023: E
Lifespan: 50.000h
Certification: CE - RoHS
Warranty: 5 años

Product attributes:

Color temperature CCT (°K): Selectable CCT (3000K-4000K-6000K)

Product description:

Square Recessed LED Downlight IP44 10W CCT Square recessed LED downlight of 10W power, with high-performance EPISTAR SMD2835 LED chip, providing a luminous flux of 1300 lumens. It features a micro-textured diffuser with a UGR19 rating, significantly reducing the glare effect of traditional downlights.

The LIFUD driver includes a CCT color temperature selector, allowing you to select the color temperature between 3000K / 4000K / 6000K in a single device.

With an IP44 rating on the panel, it is perfect for installations in bathrooms, kitchens, and humid areas, as well as covered outdoor spaces.

Technical Data of the Square Recessed LED Downlight IP44 10W

- **Outer dimensions:** 95x95mm
- **Ceiling cutout:** 88x88mm
- **Depth:** 35mm

- **Average consumption:** 10W
- **Replacement for:** 100W in conventional luminaires / 26W in low consumption luminaires
- **Energy consumption savings:** 90%
- **Includes external driver:** with CCT color selector function
- **CCT color temperatures:** 3000K / 4000K / 6000K
- **Driver connection:** direct to 230V mains
- **Panel IP rating:** IP44, suitable for humid areas. Not recommended for outdoor use.
- **Luminous angle:** 120°
- **Low glare rating:** UGR19
- **Color rendering index:** CRI>85

Benefits of the Square Recessed LED Downlight IP44 10W

- **Energy efficiency:** With a consumption of 10W, it replaces 100W conventional luminaires, saving up to 90% in energy consumption.
- **Color temperature selector:** The LIFUD driver allows choosing between 3000K, 4000K, and 6000K in a single device, adapting to the needs of the space.
- **Resistance and durability:** With an IP44 rating, it is perfect for bathrooms, kitchens, and humid areas.
- **Quality lighting:** With a CRI>85 and a luminous angle of 120°, it offers uniform and high-quality light.
- **Glare reduction:** Thanks to its microprismatic diffuser with UGR19, glare is minimized, providing a visually comfortable environment.

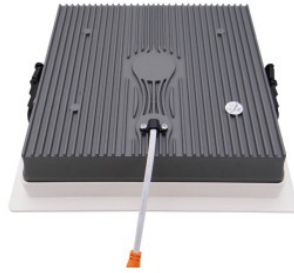
Recommended Uses and Applications

- **Bathrooms and kitchens:** Ideal for humid areas thanks to its IP44 protection rating.
- **Offices and shops:** Perfect for work and sales areas where uniform and glare-free lighting is needed.
- **Corridors and common areas:** Provides efficient and comfortable lighting in high-traffic areas.
- **Covered outdoor areas:** Suitable for outdoor use as long as they are covered and protected from direct rain.

Installation Recommendations

- Make the ceiling cutout with a square opening of 88x88mm.
- Connect the external driver directly to the 230V mains.
- Select the desired color temperature using the CCT selector on the LIFUD driver.
- Insert the downlight into the cutout and secure it firmly.
- Ensure that the electrical connection and installation are carried out in accordance with current regulations.

Product gallery:



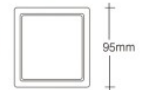
Select color:
Daylight - Cool white - Warm white



3000K 4000K 6000K



Dimensions



CRI > 70

Chromatic Reproduction Index
Farbwiedergabeindex
Índice de Reproducción Cromática
Rendu des Couleurs
Indice di resa cromatica

