

400W MAGNUM AIR LED Floodlight Philips XITANIUM Driver 60000Lm

Product codes:

Reference: MAGNUM400W



Product features:

Power (W): 400
Power source (V): 85-265V
Color temperature CCT: 4000K
Color temperature CCT: 5000K
LED: SMD3030
LED chip brand: BRIDGELUX
Luminous efficacy (Lm/W): 150
Brightness (Lm): 60000
CRI: +70
Colour: Grey
IP: IP65
IK: IK10
Luminous angle: 60°
Luminous angle: Asymmetric 136x78°
Luminous angle: 25°
Frequency (Hz): 50-60Hz
Power factor: 0.94
Measures (mm): 610x315x80mm
Material: Aluminum + PMMA
Driver: Philips XITANIUM
Operating temperature: -20°C ~ +55°C
Energy efficiency 2021: A+
Energy efficiency 2023: C
Lifespan: 50.000h
Certification: CE - RoHS
Warranty: 5 años

Product attributes:

Color temperature CCT (°K): Natural white 4000K, Cool white 5000K
Óptica: 60°, 136°x78°, 25°

Product description:

400W LED Floodlight MAGNUM AIR Philips XITANIUM - 60000Lm

The **400W LED Floodlight MAGNUM AIR** is a high-power lighting solution, designed to deliver exceptional performance with great lightness. Manufactured 100% in aluminum and oven-lacquered to prevent saline oxidation, this floodlight is compact and efficient, minimizing the need for large support poles. Equipped with a **PHILIPS XITANIUM Driver**, it ensures reliable and durable operation.

Specialized Optics for Long-Distance Lighting

The **400W MAGNUM AIR LED Floodlight** offers different optics options, optimized to maximize their effectiveness in various applications:

- **Focused Optic 60°:** Perfect for illuminating specific areas with precision, such as work zones or sports events that require concentrated and powerful lighting.
- **Focused Optic 25°:** Ideal for long-distance illumination, such as sports tracks or industrial spaces, providing intense and focused light.

- **Asymmetric Optic 136x78°:** Designed to cover large areas with uniform lighting, ideal for parking lots, stadiums, or airports, where broad and homogeneous light is needed.

Equipped with a **BRIDGELUX 3030-4D SMD LED Diode**, this floodlight offers superior luminous efficiency of **180Lm/W**, generating a luminous flux of **60,000 lumens**, making it perfect for lighting large outdoor spaces.

Adjustable and Versatile for Multiple Applications

Thanks to its **tilting base support**, the **400W MAGNUM AIR LED Floodlight** is fully adjustable, allowing precise light direction to the desired area. This feature, along with its high power and specialized optics options, makes it the ideal choice for lighting:

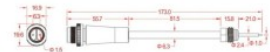
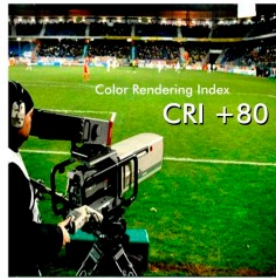
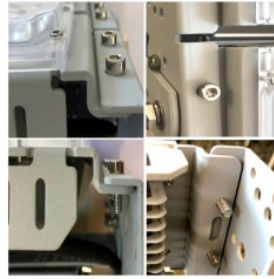
- **Stadiums:** Provides powerful and uniform lighting across the entire field of play.
- **Tracks:** Ideal for illuminating sports or training areas, ensuring visibility over long distances.
- **Airports:** Offers clear and precise lighting on runways and maneuvering areas.
- **Warehouses:** Ensures efficient lighting in large storage spaces.
- **Parking Lots:** Covers large parking areas with uniform and secure lighting.
- **Large Outdoor Areas:** Perfect for illuminating any large outdoor space where powerful and directed light is required.

Technical Specifications of the 400W MAGNUM AIR LED Floodlight

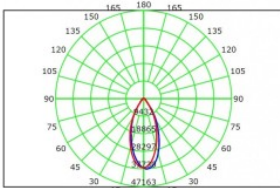
- **Power:** 400W
- **Luminous Flux:** 60,000 lumens
- **Luminous Efficiency:** 180Lm/W
- **Dimensions:** 630x305x55mm
- **Material:** Oven-lacquered aluminum
- **Available Optics:** 60°, 25°, Asymmetric 136x78°
- **LED:** BRIDGELUX 3030-4D SMD
- **Driver:** PHILIPS XITANIUM
- **Protection:** IP65, IK10
- **Power Factor:** 0.94
- **CRI:** >70
- **Warranty:** 5 years

The **LED floodlight** is supplied disassembled for easy transportation and installation. Take advantage of the versatility and power of the **400W MAGNUM AIR LED Floodlight** for your large outdoor lighting projects.

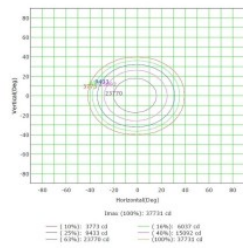
Product gallery:



Luminous Intensity Distribution Curve



Isocandela (rectangle)



- 100%: 3773 cd
- 75%: 4641 cd
- 50%: 5509 cd
- 25%: 6377 cd