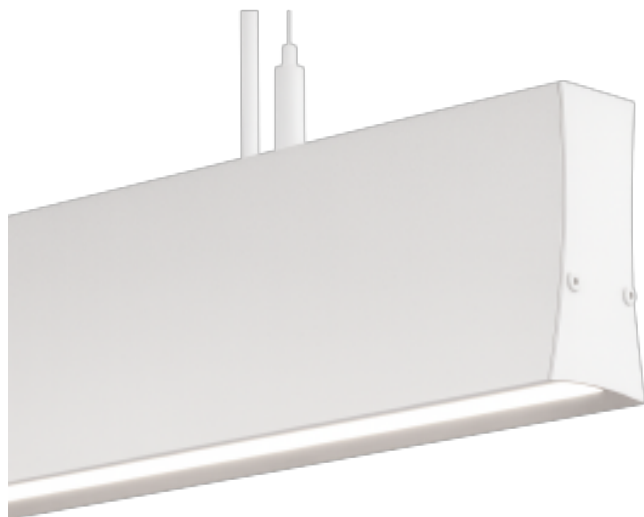


# LOLA White Pendant LED Linear Light 150cm

## Product codes:

Reference: 17013-15-BL



## Product features:

Power (W): 60  
 Power source (V): 85-265V  
 Color temperature CCT: 2700K  
 Color temperature CCT: 4000K  
 Color temperature CCT: 6000K  
 LED: SMD3040  
 Luminous efficacy (Lm/W): 110  
 Brightness (Lm): 6600  
 CRI: +82  
 Colour: White  
 IP: IP20  
 Luminous angle: 60°  
 Frequency (Hz): 50-60Hz  
 Power factor: 0.97  
 Measures (mm): 1500x88x40mm  
 Material: Aluminum + PC  
 Operating temperature: -20°C ~ +55°C  
 Energy efficiency 2021: A+  
 Energy efficiency 2023: C  
 Lifespan: 50.000h  
 Certification: CE - RoHS  
 Warranty: 5 años

## Product attributes:

Color temperature CCT (°K): Warm white 2700K, Natural white 4000K, Cool white 6000K  
 Dimming system: No dimming (On/Off), TRIAC, DALI

## Product description:

DESIGN LOLA Linear LED Pendant Light - 150cm

**Manufacturing lead time for this lamp is approximately 5-7 working days**

Minimalist Design & High Performance

The **DESIGN LOLA Linear LED Pendant Light** is a professional lighting solution, manufactured in Spain, designed to deliver efficient, high-quality illumination in demanding environments. Featuring a **matte white lacquered aluminium profile** and a modern design, it is ideal for spaces requiring elegant and functional lighting.

Equipped with **SMD3040 LED chips**, it offers an outstanding efficiency of **110Lm/W**, producing a luminous flux of **6600 lumens** while consuming only **60W**. Perfect for intensive use up to 24h, this luminaire ensures durability and reliability in any setting.

Visual Comfort & Efficiency

The **DESIGN LOLA Linear Light** features a **microprismatic diffuser** that reduces glare index to **UGR19**, providing uniform and pleasant lighting for workspaces, studios and offices. This design helps prevent eye strain, enhancing comfort and productivity.

#### Easy Installation & Connection

The light comes with an **adjustable suspension kit** up to 2 metres, allowing it to be hung from ceilings and height-adjusted as needed. Electrical connection is made directly to **230V** using the supplied cable for a quick and safe installation.

#### Technical Specifications

- **Power consumption:** 60W
- **Luminous flux:** 6600 lumens
- **Efficiency:** 110Lm/W
- **LED chip:** SMD3040
- **Glare index:** UGR19
- **Material:** Matte white lacquered aluminium
- **Diffuser:** Microprismatic
- **Dimensions:** 1500x88x40mm
- **Installation:** Pendant with adjustable suspension kit up to 2m
- **Connection:** Direct to 230V
- **Use:** Indoor, designed for intensive use up to 24h
- **Warranty:** 5 years

#### Product Advantages

- **High efficiency:** 110Lm/W for reduced energy consumption.
- **Professional design:** Made in Spain with high-quality materials.
- **Visual comfort:** Microprismatic diffuser that reduces glare.
- **Versatility:** Ideal for offices, studios, coworking spaces and retail.
- **Easy installation:** Adjustable suspension kit and direct 230V connection included.

#### Uses & Applications

The **DESIGN LOLA Linear LED Pendant Light** is perfect for a variety of environments requiring efficient, stylish lighting:

- **Offices & Coworking spaces:** Provides uniform and comfortable lighting.
- **Studios & Workshops:** Ideal for tasks requiring visual precision.
- **Retail Spaces:** Combines elegance with functionality.
- **Classrooms & Libraries:** Improves visual comfort in educational settings.
- **Homes:** Perfect for home offices and study areas.

#### Product gallery:

